

Greenngo

Handling System BY MOVEX INNOVATION

AN
INNOVATIVE
HANDLING
SYSTEM
BASED ON
Track-O
TECHNOLOGY

BATTERY
OPERATED

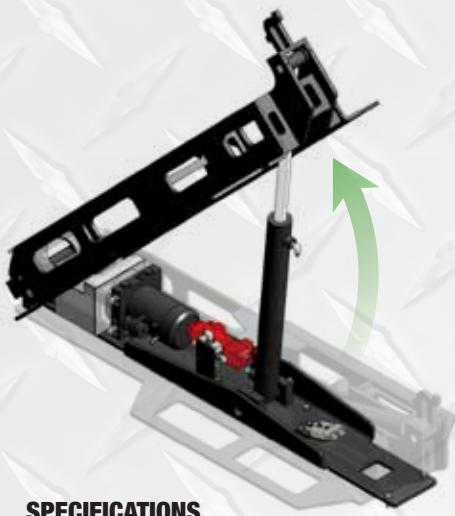


2013
MIP AWARD WINNER
WORLD OF CONCRETE

« THE MOST INNOVATIVE PRODUCT »
Category:
CONCRETE CONSTRUCTION EQUIPMENT

Greenngo
Handling System BY MOVEX INNOVATION

AN ERGONOMIC, TIME-SAVING,
SAFE AND COST-EFFECTIVE
HANDLING SOLUTION by **MOVEX**
INNOVATION



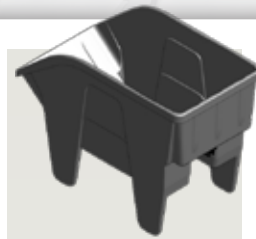
GreenGO

Handling System BY MOVEX INNOVATION

The **GreenGO** can easily, quickly and safely handle heavy equipment and large volumes of material in places that would otherwise be hard to access.

SPECIFICATIONS

| | |
|-------------------------|-------------------------------------|
| Frame | 3/8 in. (9,5 mm) steel construction |
| Hydraulic pump capacity | 1.9 cc/rev |
| Pump electric motor | DC 24V – 2 hp |
| Hydraulic tank | 2.5 litres |
| Working angle | 0° to 45° degrees |
| Climb | 0° to 45° degrees |
| Dump Lift capacity | 2300 lbs (1043 kg) |
| Installation time | 30 minutes |
| Weight | 300 lbs (135 kg) |



STANDARD HOPPER

Capacity - weight 1500 lbs (680 kg) *horizontal*
600 lbs (272 kg) *staircase*

Material Polyethylene

Capacity - volume 45 cu. ft. (1,27 m³).

Dimensions (Length, Width, Height) approx. 70 in. x 35 1/4 in. x 49 1/8 in.
(178 cm x 89,5 cm x 125 cm)



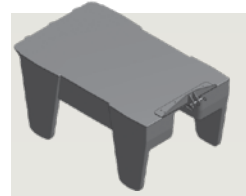
LOW PROFILE HOPPER

Capacity - weight 2300 lbs (1043 kg) *horizontal*
600 lbs (272 kg) *staircase*

Material Aluminum

Capacity - volume 15 cu. ft. (0,42 m³ or 425 L)

Dimensions (Length, Width, Height) approx. 61 1/4 in. x 32 1/8 in. x 28 1/2 in.
(156 cm x 82 cm x 72,5 cm)



PALLET STYLE BASE

Capacity - weight 2300 lbs (1043 kg) *horizontal*
600 lbs (272 kg) *staircase*

Material Aluminum

Capacity - volume N/A

Dimensions (Length, Width, Height) approx. 58 in. x 30 in. x 28 in.
(148 cm x 76 cm x 71 cm)

DESIGNED TO BE USED IN COMBINATION WITH :

Track-O Lift

Track-O Lift is a safe stair climber and motorized hand truck that helps eliminate the risk of injury.

Easy to operate, reliable and versatile, the **Track-O Lift** is a material handling and lift equipment solution that is also rugged and environmentally friendly.

- **ELECTRIC VEHICLE**
- **WIRELESS REMOTE CONTROL**

DISTRIBUTED BY:



Twin-Track 66



Twin-Track Heavy Duty

SPECIFICATIONS

| | | |
|-----------------------------------------|----------------------------------------------------------|--------------------------------------------------------|
| Frame | Steel | Steel |
| Cabinet | Aluminum | Steel |
| Length | 66 in (1676 mm) | 60,625 in (1540 mm) |
| Width | 29.25 in (743 mm) | 27 in (686 mm) |
| Height | 13.5 in (343 mm) | 13,625 in (346 mm) |
| Weight (with front handle) | 820 lbs (372 kg) | 1110 lbs (503 kg) |
| Ground Clearance | 2.5 in (63.5 mm) | 2.5 in (63.5 mm) |
| Load bearing capacity (inclined) | 1100 lbs (500 kg) <i>at 40°</i> | 2500 lbs (1134 kg) <i>at 30°</i> |
| Load bearing capacity (flat) | 2200 lbs (1000 kg) | 6000 lbs (2721 kg) |
| Maximum inclination | 40° | n/a |
| Linear speed | 44 ft/min (13,4 m/min) | 66 ft/min (20 m/min) |
| POWER | | |
| Motor | (2) Industrial | (2) Industrial |
| Horse Power (HP) | 1 HP (x2) | 1 HP (x2) |
| Gearbox | 100:1 (x2) | 100:1 (x2) |
| POWER FEATURES | | |
| Battery included | 2 | 2 |
| Integrated AC-DC Battery Charger | 1 | 1 |
| Battery Amperage | 85 A | 115 A |
| Operating voltage | 24 VDC | 24 VDC |
| Continuous Run-Time* | 1,5 hours approx. <i>(without load, flat surface)</i> | 3 hours approx. <i>(without load, flat surface)</i> |

Visit Us:

track-o.com