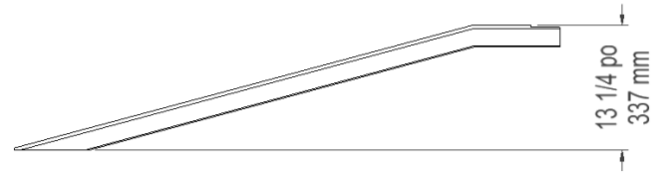
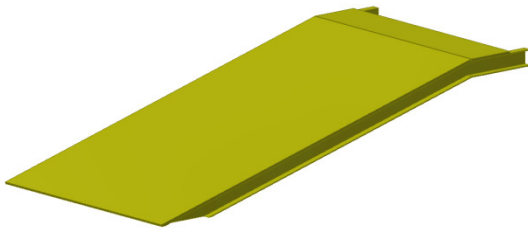
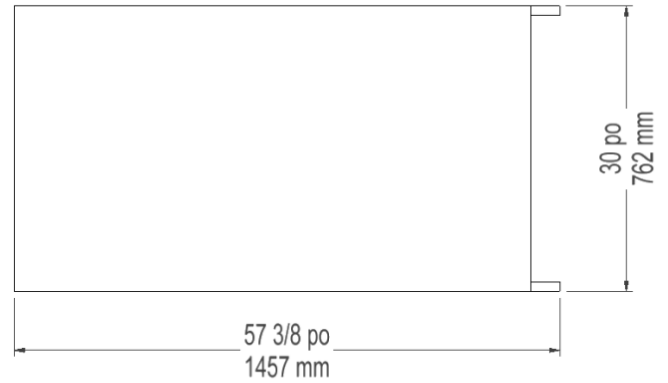
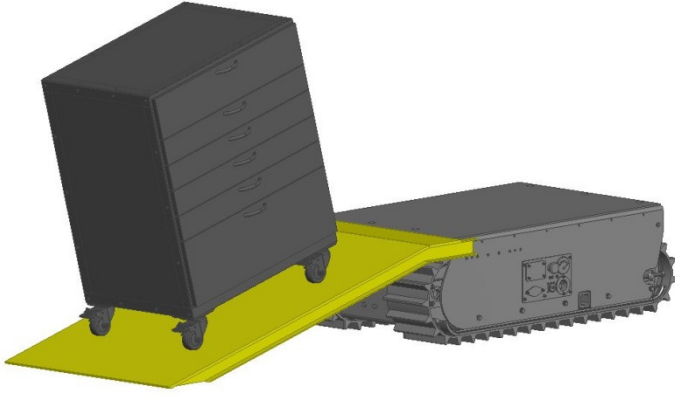


LOADING PLATFORM

TECHNICAL SPECIFICATIONS



PHYSICAL CHARACTERISTICS

Material	Aluminum	
Length	57 3/8 in	1457 mm
Width	30 in	762 mm
Height	13 1/4 in	337 mm
Weight	75 lb	34 kg
Load bearing capacity	750 lb	341 kg

COMPATIBLE WITH :

- Track-0 75
- Twin-Track 47
- Twin-Track 66
- Heavy-Duty
- Cross-Country

The information contained in this document is subject to change without notice.